



Steve Calet
 NMLS #532340
 USbank
 Senior Mortgage Banker, MBA
 steve@stevecalem.com
 Cell: 301.996.9799
 5515 Security Lane Suite 725
 North Bethesda, MD 20852
 http://www.stevecalem.com



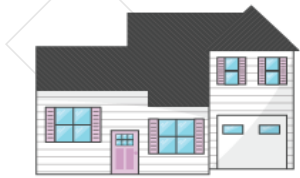
Real Estate Report Card

Montgomery County, MD 20814

🏠 - Median Income 🏠 - Jobs 🏠 - 1yr Appr. Forecast 🏠 - 5yr Appr. Forecast 🏠 - Historical Appr. 🏠 - Affordability

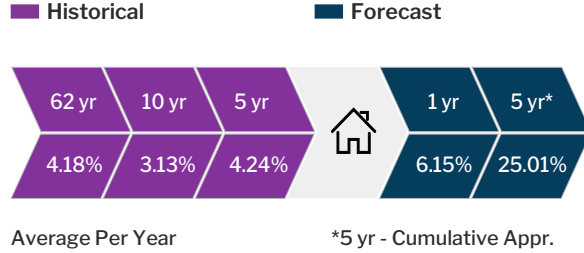
Median Home Price

\$1,066,233

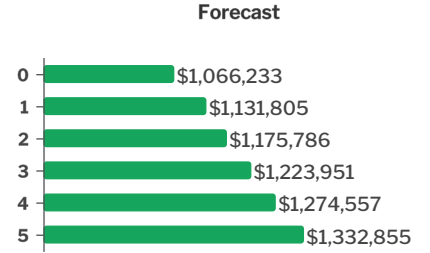


Price / Sq Ft
\$277

Appreciation



5 yr Gain: \$266,622



Inventory

Homes For Sale per 1000 people: **2**

Y/Y -10% M/M -5%

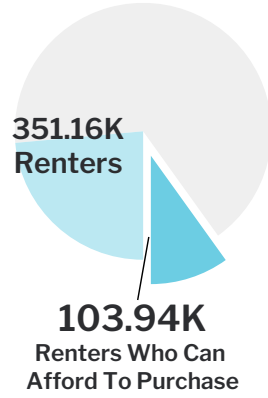
Demographics

Ages

18-26	123.71
27-35	133.8
36-44	142.85
45-54	149.22
55-64	135.8

*In thousands

1.05M Total Pop.



*Household Formations

Based on 27-35 population: **12.71K**

*1st Time Home Purchases To Be Taken From Inventory

Accounts for 67% home ownership rate: **8,457**

*Actual Homes Being Built

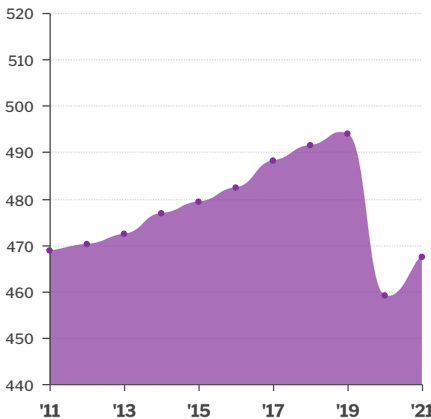
2,217

Actual (checked) Needed (empty)

*Annual

Total Employment

In Thousands

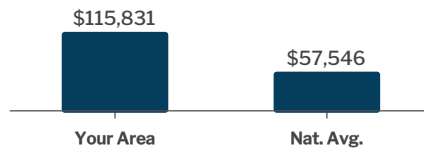


Unemployment Rate

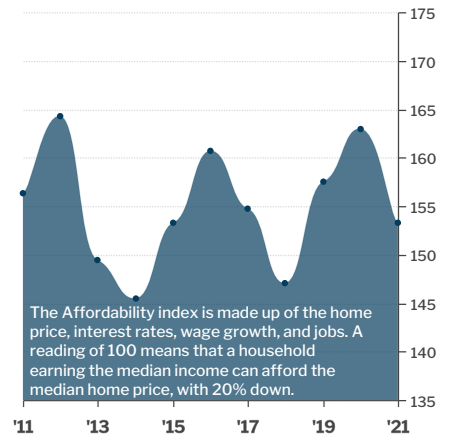
National Average: 4.2%

Year	Rate
2021	5.53%
2020	6.38%
2019	2.87%
2018	3.08%

Median Household Income



Affordability Index



All information is subject to change.